



**INSTITUTE OF AGRICULTURE,
Lithuanian Research Centre
for Agriculture and Forestry**

**RESEARCH AND
SERVICES**



DEPARTMENT OF PLANT NUTRITION AND AGROECOLOGY

Head Dr. Sigitas Lazauskas
Tel. +370 347 37 193
E-mail: sigislaz@lzi.lt

Research staff: 9 research workers and 2 PhD students

Research topics

- Crop nutrition diagnosis and crop yield modelling
- Effects of long-term fertilizer application on the productivity of agricultural crops, migration of chemical elements, nutrient balance
- Biodiversity formation and variation in grassland and field swards in agrolandscapes differing in genesis and sustainability
- Yield formation of grain legumes, cereals and grasses, sustainable use of soils in organic agriculture
- Potential of energy plants and search for new plant species for biofuel production
- Chemical and biophysical quality of soil in different agroecosystems

Services

- Recommendations on the use of various organic and mineral macro- and micro fertilizers for field crops nutrition; efficient rates of fertilizers for specific soil conditions and predicted yield, fertilizer application timing and methods
- Recommendations on grassland management and agroecology
- Recommendations on energy crops cultivation and use for the development of innovative products





Photosynthetic measurements



Assessment of plant foliage



Experiments on agroecological systems



Agrobiological analyses of plants



Dissemination of research results



Spectrometric measurements

DEPARTMENT OF PLANT PATHOLOGY AND PROTECTION

Head Dr. Roma Semaškiene

Tel. +370 347 37 038

E-mail: roma@lzi.lt

Research staff: 9 research workers and 3 PhD students

Research topics

- Epidemiology and biology of arable crops' diseases and pests, the distribution of pathogen and insect pest populations, evaluation of the crop loss
- Factors favouring emergence of new diseases and insect pests, prevention and control methods
- Development of human-and environment-safe, efficient and profitable disease and insect pest management strategies
- Mould fungi and mycotoxin contamination in agricultural products
- Resistance of plant pathogens and insect pests to pesticides

Services

- GEP trials on efficacy and selectivity evaluation of plant protection products in arable crops
- Recommendations on disease and insect pest control in arable crops
- A seed dressing agent for legumes – rhizogen, and wine yeast production
- Seed and grain health and quality testing





Investigation of pest resistance to insecticides



Analysis of seed and grain infection



Recommendations on pest control



Identification of pathogens



Identification of diseases and pests and their damage, training



GEP trials

DEPARTMENT OF SOIL AND CROP MANAGEMENT

Head Dr. Virginijus Feiza

Tel. +370 347 37 275

E-mail: virginijus.feiza@lzi.lt

Research staff: 8 research workers and 2 PhD students

Research topics

- Selection of crop and soil management systems, crop rotations and their sequences
- Effects of soil tillage on the variation of soil physical properties under changing climate conditions
- Development of reduced soil tillage system and identification of the feasibility to reduce soil tillage for individual zones of the country
- Weed and crop competition; optimization of weed control in a crop stand
- Changes in weed flora and seed bank in the soils of different acidity and productivity

Services

- Determination of quality indicators of plants
- Recommendations on the choice of pre-crops, soil tillage systems and methods, application of crop cultivation technologies
- Consultations on the choice of crop rotations, soil tillage systems, cultivation technologies of grain legumes and cereals, oilseed rape, sugar beet, maize, chemical and mechanical weed control
- Research on weed resistance to herbicides
- Biological efficacy testing of new chemical agents
- Research on soil physical parameters
- Determination of soil compaction and ploughing and stubble breaking pan
- Soil profile diagnostics and morphology
- Determination of soil water retention (field capacity, available water content, wilting point), soil pore size distribution, water permeability





Determination of depth and thickness of soil plough pan



Investigation of weed resistance to herbicides



Investigation of soil morphological and soil formation processes



Investigation on chemical weed control in cereals



Investigation of sugar beet soil and crop management practices and reduction of weed infestation



Investigation of soil water retention – plant supply with water under changing climate conditions

CHEMICAL RESEARCH LABORATORY

Head Dr. Alvyra Šlepetienė

Tel. (+370) 347 37 664; 612 43 141

E-mail: alvyra@lzi.lt

Research staff: 5 research workers and 3 PhD students

Research topics

- Grass/legume, rapeseed, maize and grass silage quality as affected by genotypic diversity, agrotechnological peculiarities and climate change
- Physical, chemical and technological tests on grain, flour and dough quality, assessment of quality variation causality, interrelationships and suitability for industrial processing
- Regularities of variation of soil chemical properties (contents of nitrogen, sulphur, phosphorus, potassium, amount of organic matter, its composition and characteristics) as influenced by soil and crop management practices; variation of carbon in pastures, grasslands, and cultivated soil; assessment of the effects of land use conversion on carbon sequestration. Introduction of new research methods for quality determination of phyto-raw materials
- Quality and safety of food, forage, renewable energy sources as influenced by plant genetic origin, climate peculiarities, plant nutrient supply
- Feasibility of multifunctional use of agricultural traditional and alternative herbaceous plants for the development of technologies for the production of phyto-raw materials and bioproducts and their environmental impacts

Services

- Analyses of herbaceous forages, plant biomass and silage
- Analyses of various forages (pulp, cake, granulated and combined forages)
- Analyses of cereal grain and flour quality
- Analyses of industrial crops (oilseed rape, potatoes, sugar beet, Jerusalem artichoke)



- Analyses of rape seed and cake quality
- Chemical analyses of soil and peat
- Determination of water-soluble carbonates and water-soluble carbon by an ion chromatography method
- Analyses of chemical composition of energy crops and various biofuels
- Analyses of biogas formation and by-products
- Analyses of farmyard manure, slurry and other substrates
- Analyses of quality composition of soil humus, humic fertilizers and agents
- Particle size measurement and division into groups (A, B starch, soil texture) by a laser diffraction method



Humus division into fractions



Plant and soil analyses –
determination of C, N, S
by the Dumas method
(Vario EL III, Elementar)



Determination of elements –
K, Ca, Mg, Na, Fe, Zn, Al by the
atomic absorptiometry
(AAnalyst 200, Perkin Elmer)



Determination of grain quality –
gluten content and gluten index
(GI) (GLUTOMATIC
system, Perten)

DEPARTMENT OF CEREAL BREEDING

Head Dr. Algė Leistrumaitė

Tel. +370 347 37 398

E-mail: alge@lzi.lt

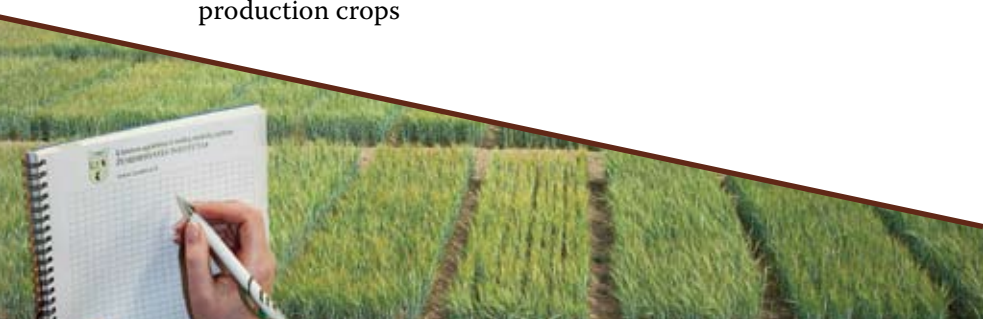
Research staff: 6 research workers

Research topics

- Development of new lines and populations of winter cereals, research into their adaptive qualities, yield structural elements and agronomic value, breeding of novel promising varieties
- Development of genotypes of spring cereals, research into their adaptive and agronomic characteristics, identification of promising germplasm for breeding of novel varieties
- Development of genotypes of legumes, investigation of their adaptive and agronomically valuable characteristics, breeding of new homogeneous varieties of different earliness
- Investigation of genetic recourses of cereals and grain legumes, their evaluation and selection according to adaptability to biotic and abiotic factors
- Selection of cereal varieties and breeding lines best suited for organic farming
- Maintenance breeding and seed production of cereals and grain legumes

Services

- Consultations on the issues relating to cultivation of Lithuanian varieties of cereals, seed production and inspection of seed production crops





Hybridization of spring barley varieties



Plant measurements in the trials



Winter wheat variety
'Kena DS'



Maturity assessment of winter wheat



Spring barley variety
'Ema DS'



Investigation of winterhardness of cereals

DEPARTMENT OF GRASS BREEDING

Head Dr. Vilma Kemešytė

Tel. +370 347 37 293

E-mail: vilma@lzi.lt

Research staff: 5 research workers and 2 PhD students

Research topics

- Performance of major forage and turf grass breeding programmes; forage grasses: *Trifolium pratense* L., *T. repens* L., *Medicago sativa* L., *Phleum pratense* L., *Lolium perenne* L., *Festulolium*, *Festuca pratensis* Huds., *Dactylis glomerata* L., *Poa pratensis* L.; turf grasses: *Poa pratensis* L., *Festuca rubra* L., *F. ovina* L., *Agrostis capillaris* L., *Lolium perenne* L.
- Maintenance breeding and seed production
- Genetic resources of forage and turf grasses
- Search for promising species of perennial grasses and legumes and non-traditional plants, investigation and breeding of *Panicum virgatum* L., *Dactylis polygama* Horv., *Arrhenatherum elatius* P. Blauv, *Melilotus* spp., *Poa nemoralis* L., *Koeleria gracilis* Pers., *Festuca trachyphylla* (Hack.) Krajina, *Festuca psammophila* Fritsch, *F. sabulosa* H. Lindb. and other species

Services

- Consultations on the issues of cultivation of Lithuanian varieties of forage and lawn grasses, seed production and seed purchase
- Plant breeding experiments in the field and controlled conditions





Multiplication of common timothy



Application of selection and hybridization methods using isolators



Variety testing of legumes



Training on identification of grass species



Genetic collection of varieties of grasses



Seed cleaning operations

LABORATORY OF GENETICS AND PHYSIOLOGY

Head Dr. Kristina Jonavičienė

Tel. +370 347 37 149

E-mail: kristinaja@lzi.lt

Research staff: 7 research workers and 2 PhD students

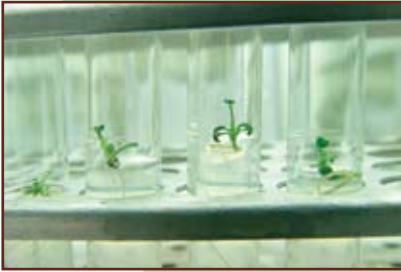
Research topics

- Development of valuable breeding material using genetic and biotechnological methods
- Research on plant drought and freezing tolerance
- Development and application of advanced plant phenotyping technologies
- Wheat doubled haploid production via wheat × maize crossing
- Study of plant polyploidy
- Molecular identification and genetic diversity analysis of pathogenic fungi

Services

- Evaluation of plant freezing tolerance under controlled conditions
- Induction of wheat doubled haploids
- Production of polyploids of forage grasses





Development of gerplasm –
clover polyploids



Production of wheat doubled
haploids



Studying freezing tolerance
of plants



Plant genomic studies



Selection of valuable genotypes of
perennial ryegrass in a phytotron



Leaf elongation rate analysis of
grasses under drought stress

LABORATORY OF MICROBIOLOGY

Head Dr. Skaidrė Supronienė

Tel. +370 615 49 346

E-mail: skaidre@lzi.lt

Research staff: 2 research workers and 2 PhD students

Research topics

- Identification and control of plant pathogens
- Population structure of mycotoxin producers
- Isolation and identification of endophytic microorganisms, determination of their effects on plant growth
- Microbiological contamination of plant produce and control
- Maintenance, investigation and cultivation of the collection of symbiotic bacteria of legume plants
- Investigation of the population structure of soil microorganisms in different cropping systems

Services

- Monitoring of plant pathogens, mycotoxin producers and other microorganisms associated with soil, plant raw material, food and forage contamination; their isolation and identification according to morphological, biochemical and genetic characteristics
- Microbiological assays, analyses of micro-objects using microscopes
- Assessment of fungicidal activity of microorganisms
- Investigation of genetic, phenotypic and species diversity of plant pathogens, mycotoxin producers and nitrogen fixing plant endophytic microorganisms
- Community-level physiological profiling of soil microorganisms using *Biolog Eco* plates
- Analyses of fungal and bacterial pathogenicity to plants
- Assessment of the effects of changing environmental conditions and farming practices on the population diversity, spread and establishment of the newly emerging plant pathogens in the agroecosystems
- Multiplication of symbiotic bacteria of legumes

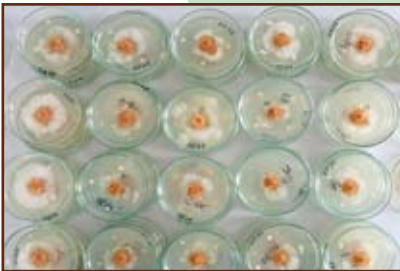




Community-level physiological profiling of soil microorganisms using a Biolog system



Pathogenicity tests



Assessment of fungicidal activity of microorganisms



Identification of causal agents of fungal diseases according to morphological characteristics



Determination of colony forming units of yeast, mould fungi and bacteria



Multiplication of symbiotic bacteria of legumes

LABORATORY OF AGROBIOLOGY

Head Prof. Habil. Dr. Gediminas Staugaitis

Tel. +370 698 16 024

E-mail: staugaitis@agrolab.lt

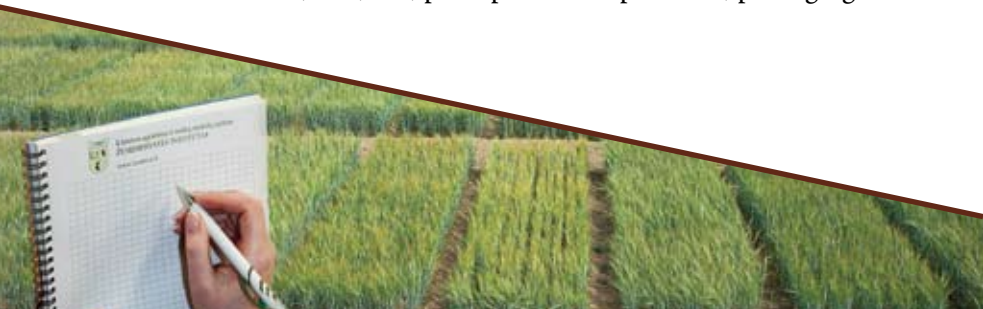
Research staff: 2 research workers and 2 PhD students

Research topics

- Soil agrochemical properties and pollution
- Application of plant nutrition diagnostics – assessment of shortage of macro- and micro-elements and optimization of their contents
- Quality of plants and food
- Development and use of novel mineral and organic fertilizers, liming materials
- Quality of soil improving materials, potential pollution, use
- Application of environmental pollution prevention measures

Services

- Quantification of low-concentration and extreme precision-requiring organic and inorganic chemical substances in the environment and various products
- Analyses of plant fibre
- Analyses of soil, water, air, sewage sludge, sapropel, forages, food, fertilizers, liming materials, peat, composts, waste materials, fuel, ash, plant protection products, packaging





Determination of pesticide residues
in plants and soil



Determination of compounds in
non-destructive biological samples



Analyses of short-fibre
compounds



Analyses of polycyclic aromatic
carbohydrates and chlorbiphenyls,
humic and fulvic acids in soil
and composts



Qualitative and quantitative
analyses of organic matter in soil
and plants



Determination of metal
concentrations in plants and
food products

INSTITUTE OF AGRICULTURE, Lithuanian Research Centre for Agriculture and Forestry

**Instituto av. 1,
LT-58344 Akademija,
Kėdainiai distr.**

www.lammczi.lt

**Phone: +370 347 37 271
Fax: +370 347 37 096**

**E-mail:
sekretoriatas@lzi.lt**

