

# Europos žaliasis kursas Koks mūsų vaidmuo?



LIETUVOS  
AGRARINIŲ IR MIŠKŲ  
MOKSLŲ CENTRAS

Gintaras Brazauskas

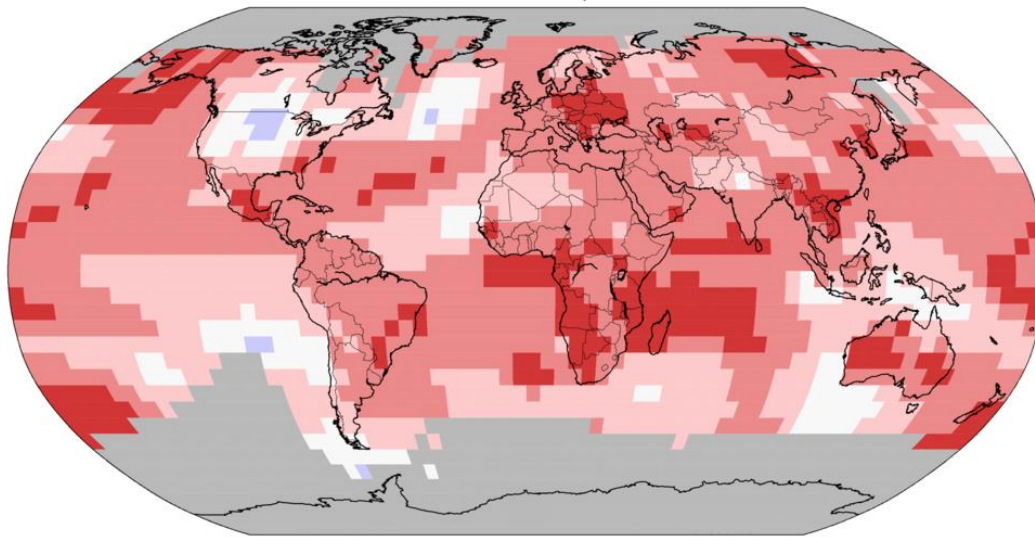
2020 m. vasario 24 d.

# 2019 m. - antri šilčiausi nuo 1880 m. (+0,95 °C)

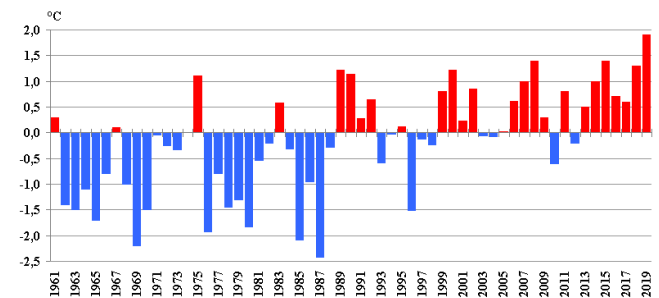
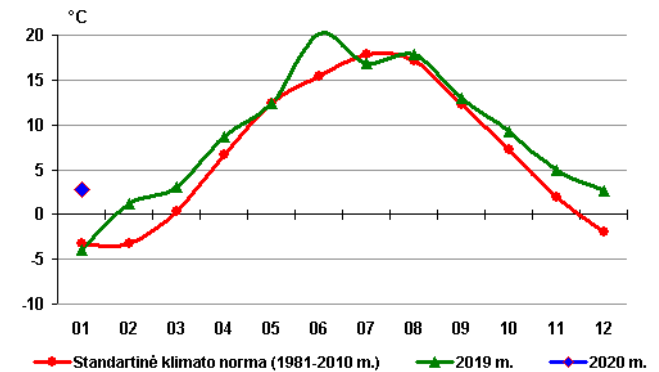
## Land & Ocean Temperature Percentiles Jan–Dec 2019

NOAA's National Centers for Environmental Information

Data Source: NOAA GlobalTemp v5.0.0–20200108



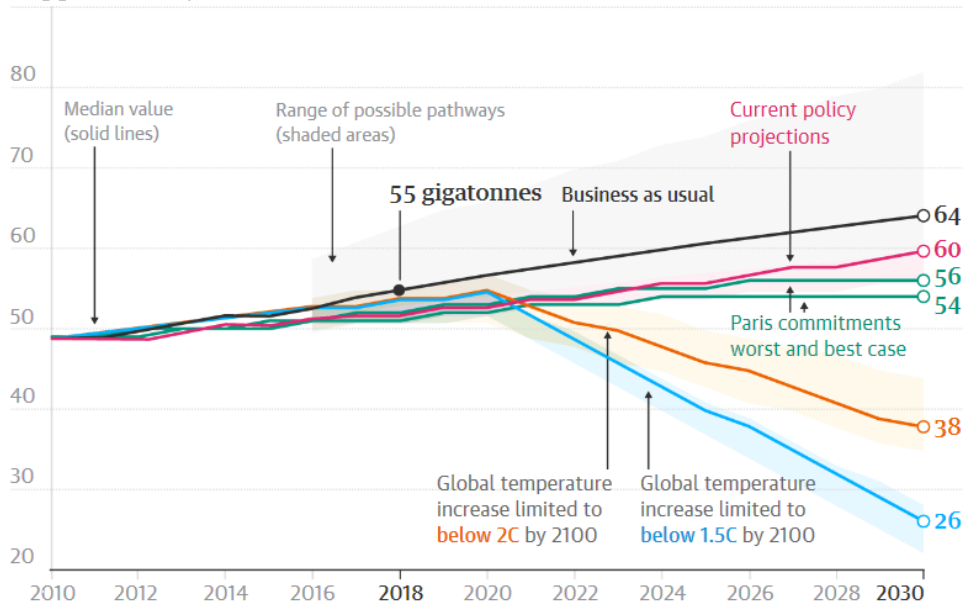
GHCNM v4.0.1.20200106.qfe



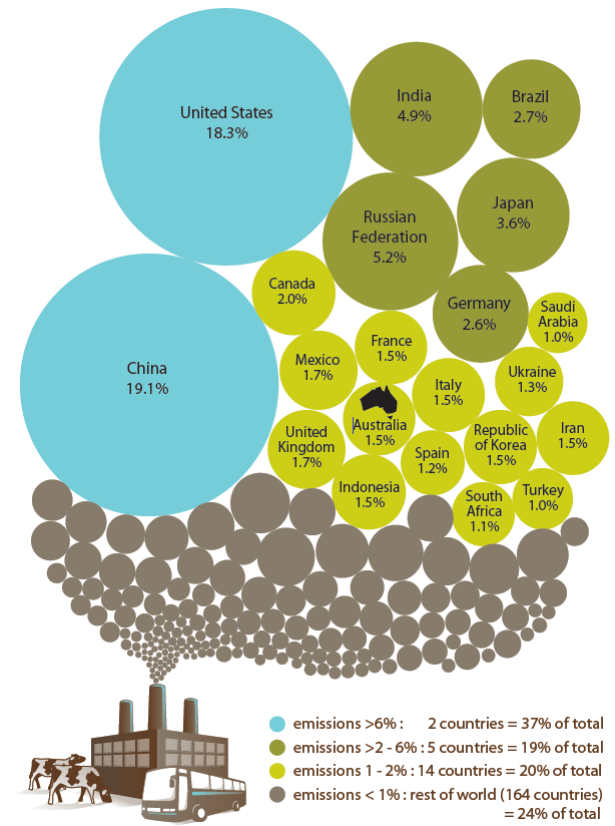
# Globalių ŠESD emisijų dinamika

## Today's carbon emissions must be halved to restrain global temperature increases to 1.5C

90 gigatonnes of equivalent carbon dioxide, annual emissions



Guardian graphic. Source: Unep Emissions Gap Report

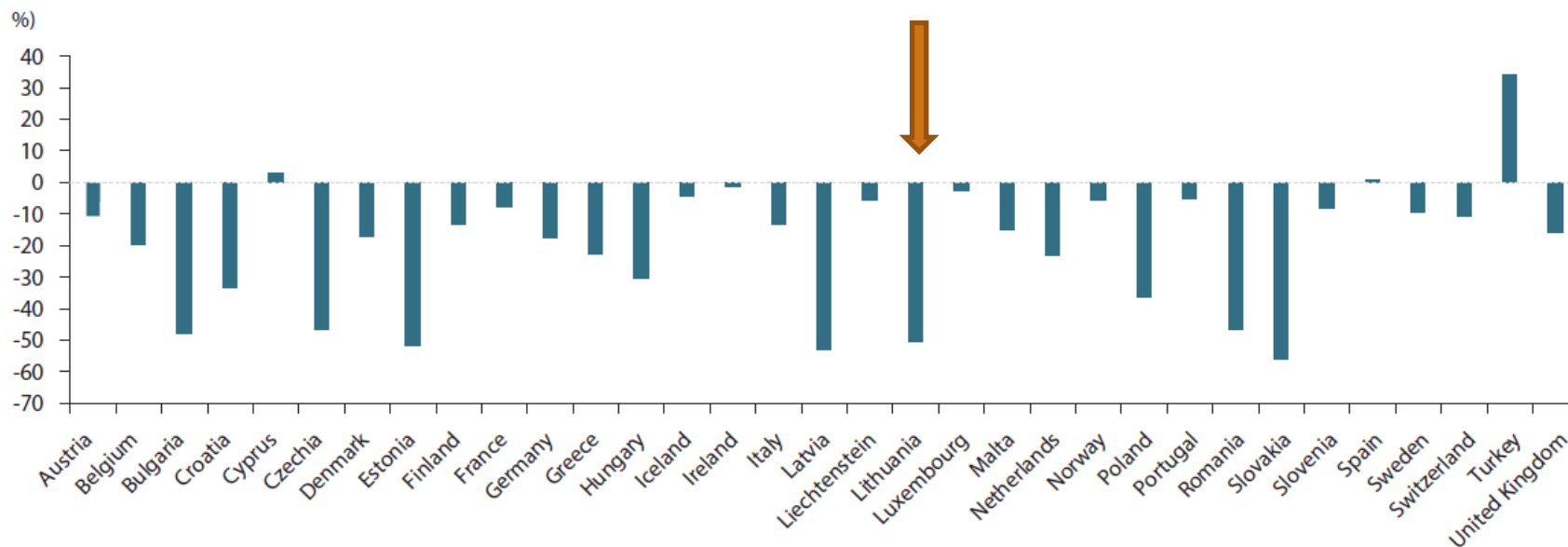


# Europos žaliasis kursas

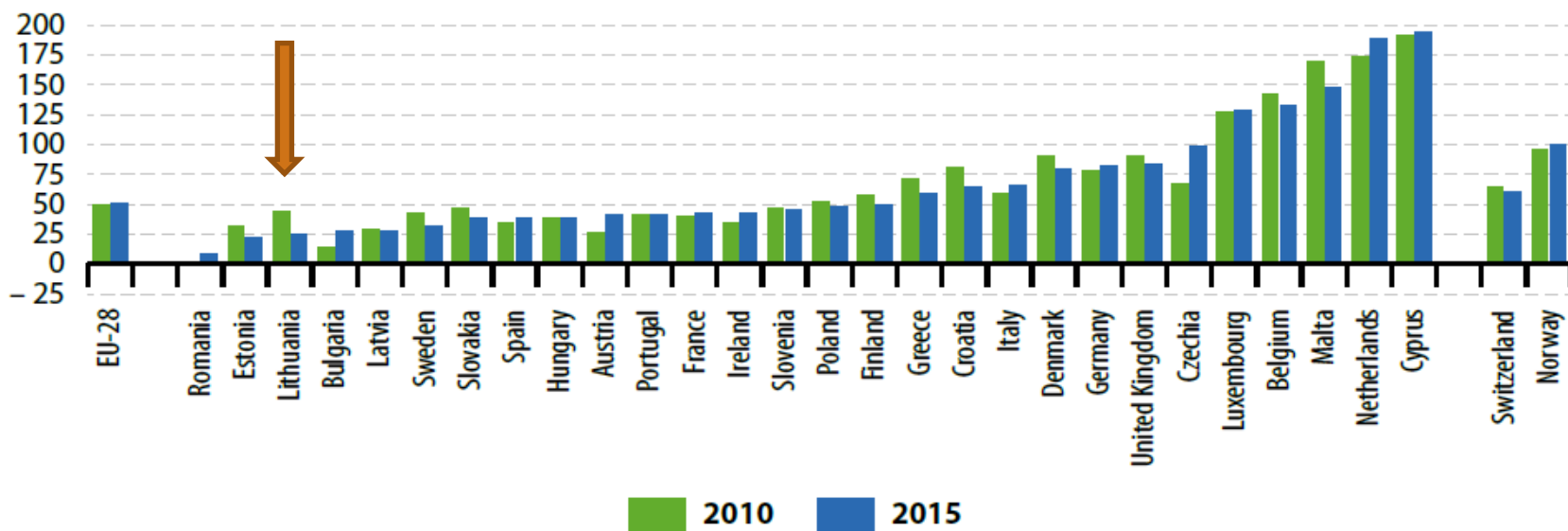
- -55 % ŠESD iki 2030 m.
- Klimatui neutrali ES 2050 m.
- 1 trln. € „Klimato bankas“
- BŽŪP
- Europos Horizontas
- Nacionalinės klimato kaitos strategijos



# Žemės ūkio ŠESD emisijų pokytis nuo 1990 iki 2016 m.

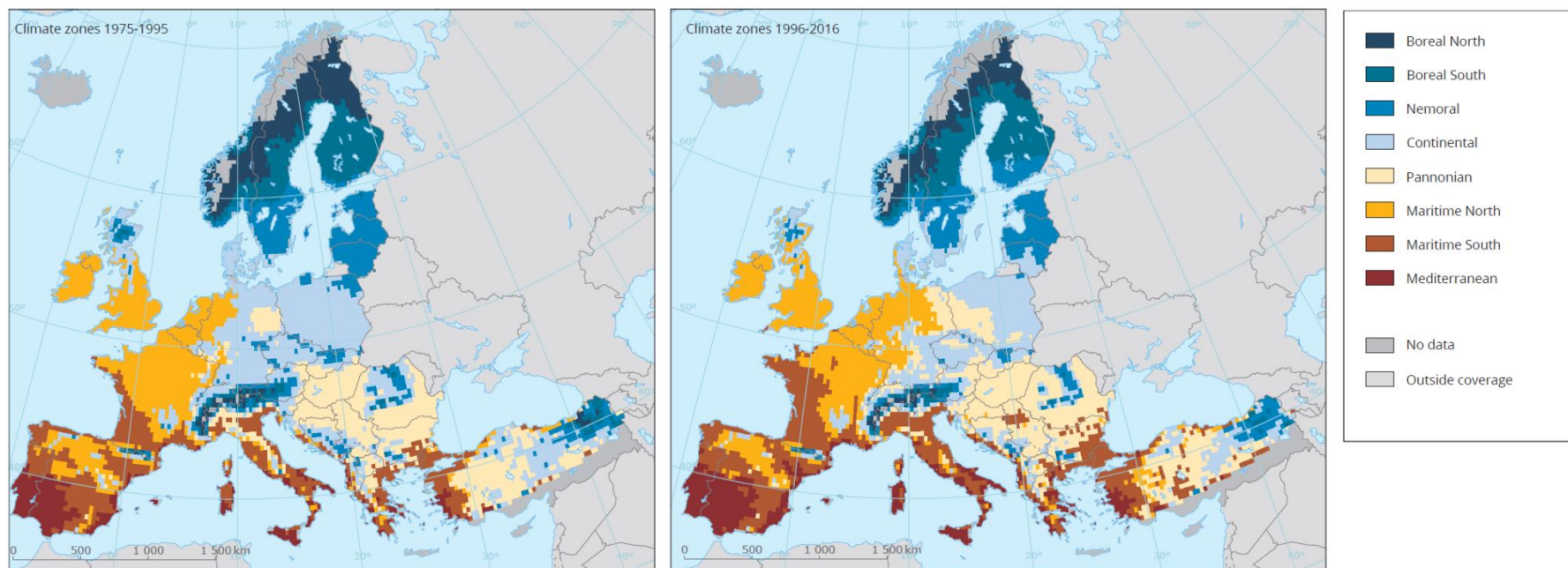


# Azoto balansas žemēs ūkyje (kg/ha)



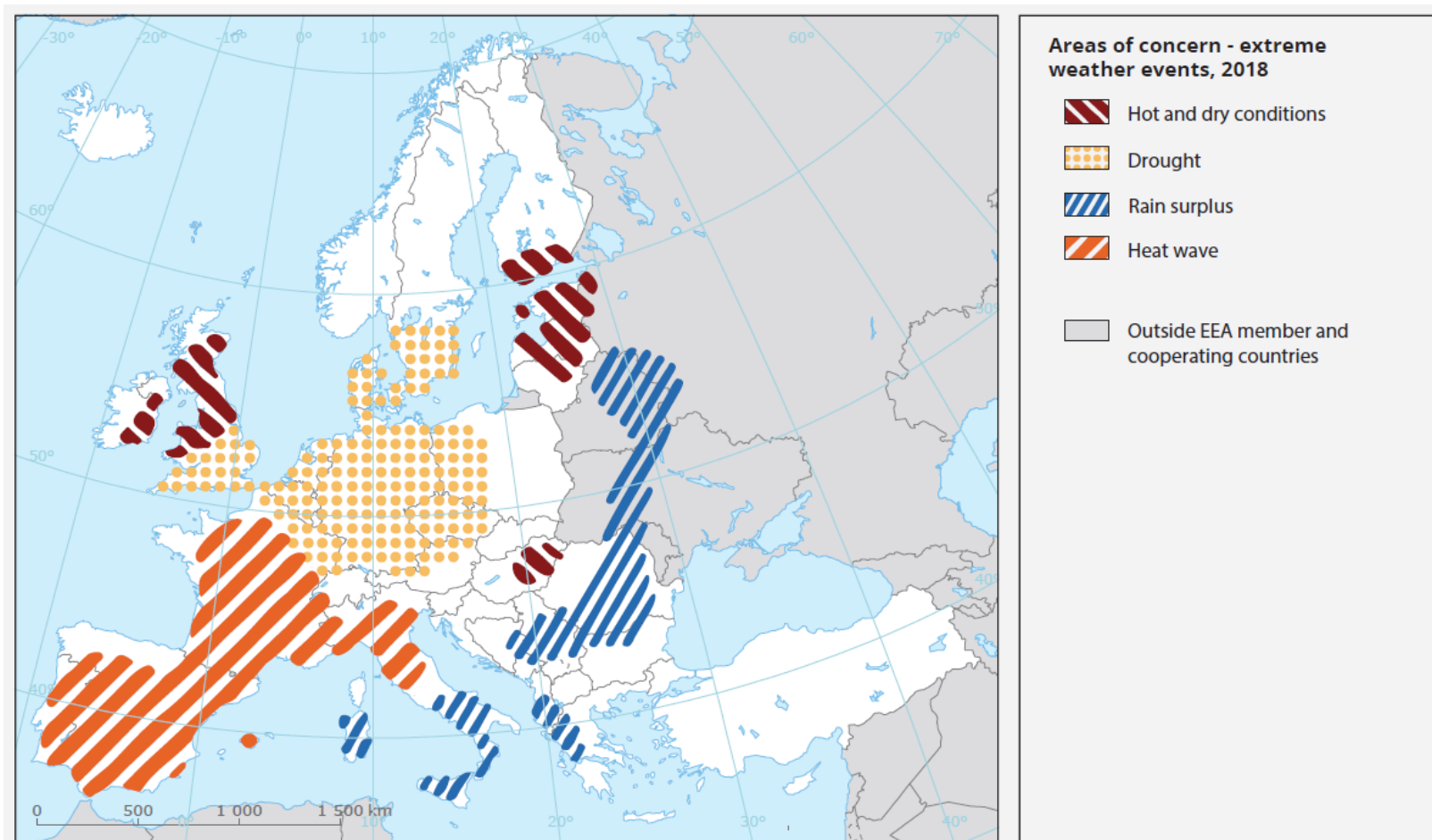
Sustainable development in the European Union ■ eurostat

# Klimato kaita jau vyksta



Joint Research Centre (JRC) based on Ceglar et al. (2019).

# Ekstremalūs reiškiniai 2018 m.



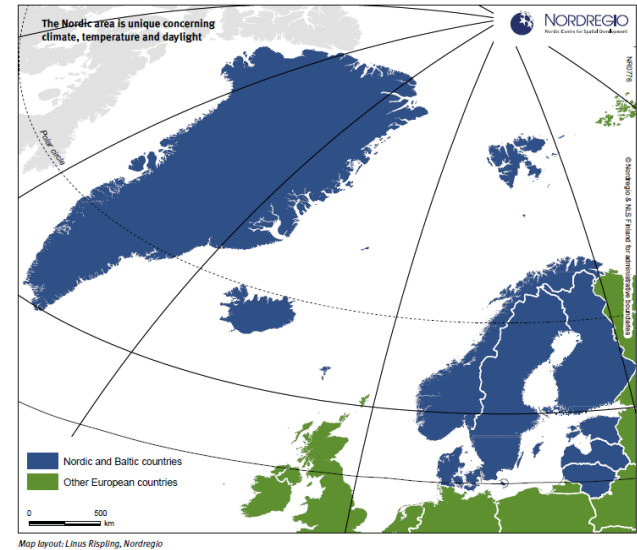


# Šiaurės šalių viešojo ir privataus sektoriaus partnerystė



## Promoting Nordic Plant Breeding for the Future

PPP Public Private Partnership for Pre-breeding



# Tarptautinis bendradarbiavimas



Lietuvos mokslo taryba



European Climate Initiative EUKI



biodiversa



eip-agri  
AGRICULTURE & INNOVATION



Interreg Europe  
European Union | European Regional Development Fund

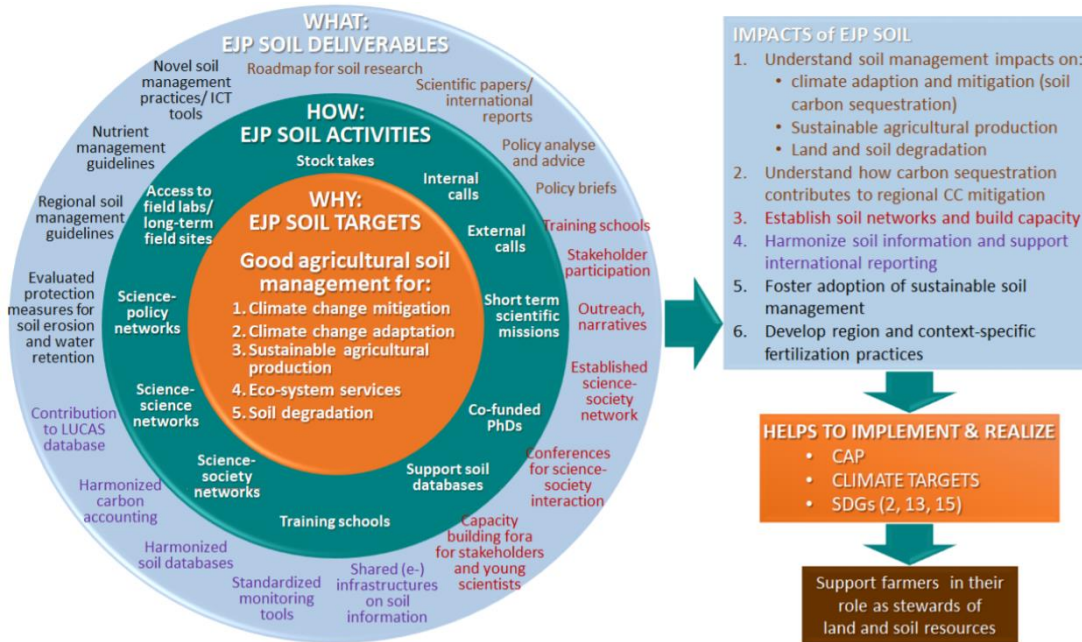
Iceland  
Liechtenstein  
Norway grants



cost  
EUROPEAN COOPERATION  
IN SCIENCE & TECHNOLOGY



# Towards climate-smart sustainable management of agricultural soils (EJP SOIL)



- IMPACTS of EJP SOIL**
1. Understand soil management impacts on:
    - climate adaption and mitigation (soil carbon sequestration)
    - Sustainable agricultural production
    - Land and soil degradation
  2. Understand how carbon sequestration contributes to regional CC mitigation
  3. Establish soil networks and build capacity
  4. Harmonize soil information and support international reporting
  5. Foster adoption of sustainable soil management
  6. Develop region and context-specific fertilization practices

- HELPS TO IMPLEMENT & REALIZE**
- CAP
  - CLIMATE TARGETS
  - SDGs (2, 13, 15)

Support farmers in their role as stewards of land and soil resources

- Projekto pradžia 2020 02
- Projekto trukmė 60 mėn.
- Biudžetas – 80 mln. eur.
- LAMMC biudžetas 1,4 mln. eur.
- 26 projekto partneriai
- 24 dalyvaujantios šalys



# European Plant Science Organization



EPSO is an independent academic organisation that represents more than 220 research institutes, departments and universities from 31 countries in Europe and beyond.

EPSO's mission is to improve the impact and visibility of plant science in Europe. Learn more about EPSO and why plants matter.



Plant biology Europe FESPB/EPSO Congress 2020,  
Turin, Italy, 29th June – 2nd July 2020

# LAMMC stažuočių programa



Dr. Neringa Rasiukevičiūtė, Ispanija



Dr. Jurga Miliauskienė, JAV



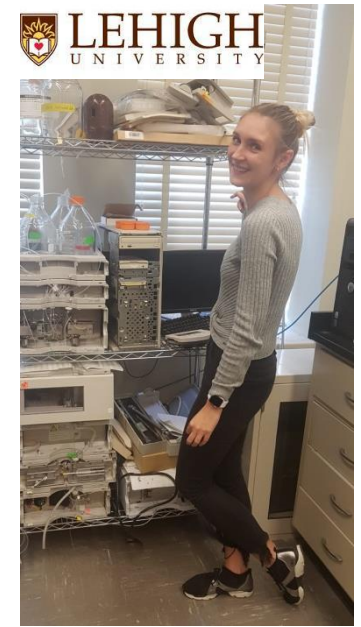
Dr. Valda Araminienė, Prancūzija



Dr. Rita Verbylaitė, Danija



Doktorantė  
Kristina Bunevičienė, JAV



Doktorantė  
Donata Drapanauskaitė, JAV

# RTO Lithuania



- Nariai:
  - FTMC
  - LEI
  - LAMMC
  - VŠĮ FI MTP

# Apibendrinimas

- ⦿ Klimato kaita vyksta čia ir dabar
- ⦿ Tai kartu ir iššūkis, ir galimybės
- ⦿ Būtinai naujos žinios ir inovacijos
- ⦿ Kiekvienas privalome imtis veiksmų

# EAT-Lancet dieta



Source: EAT-Lancet Commission

BBC

1. 50 g
2. 75 g
3. 28 g
4. 13 g
5. 14 g
6. 232 g
7. 250 g
8. 300 g



**Ačiū už dėmesį!**

Daugiau informacijos: **[www.lammc.lt](http://www.lammc.lt)**