



**LITHUANIAN  
RESEARCH CENTRE  
FOR AGRICULTURE  
AND FORESTRY**

# PhD studies at LAMMC

---

Dr. Vita Tilvikienė

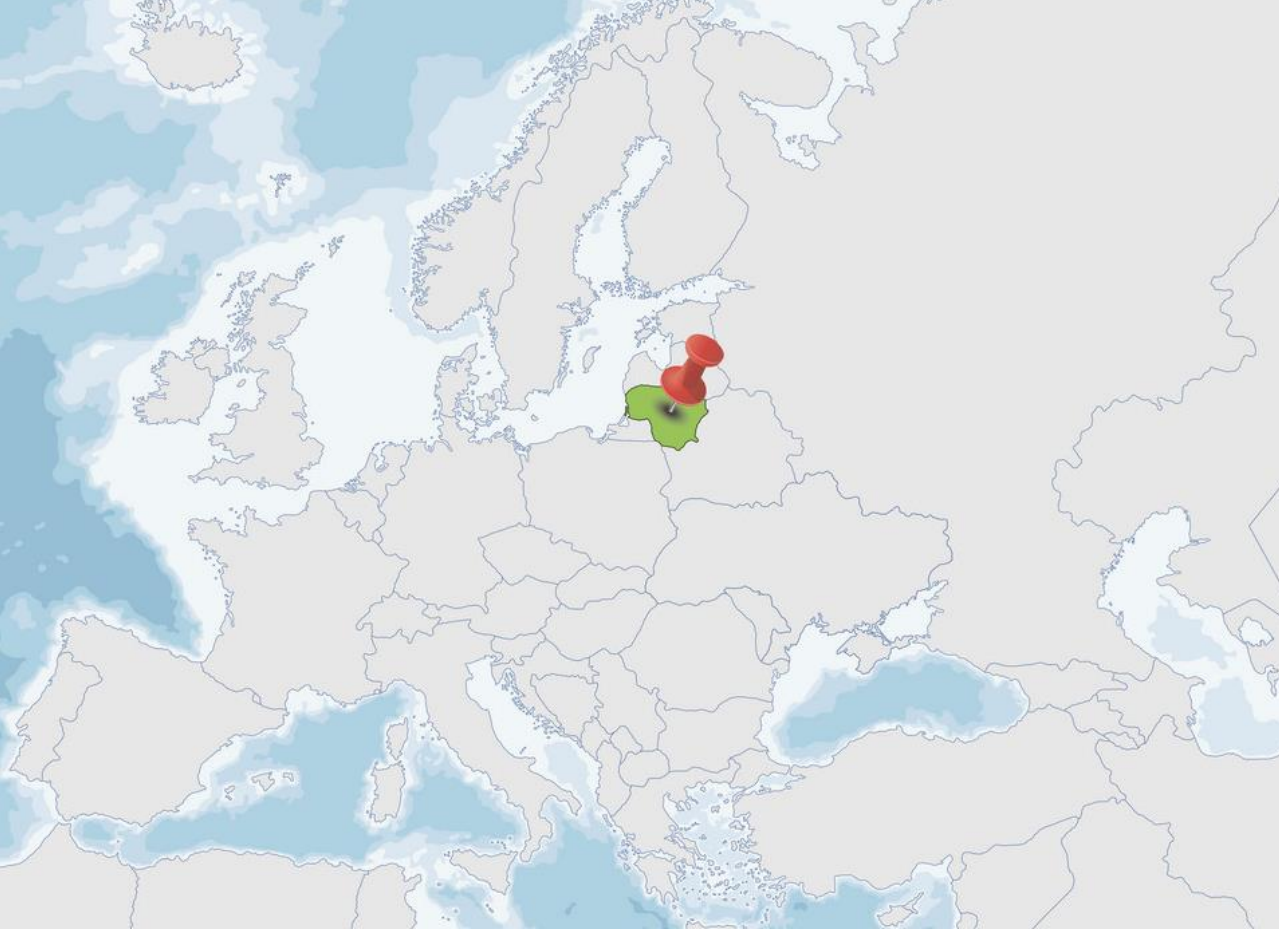


# Fascination of Plants Day 2021

The Fascination of Plants Day, initiated and  
coordinated by the European Plant Science  
Organisation (EPSO)

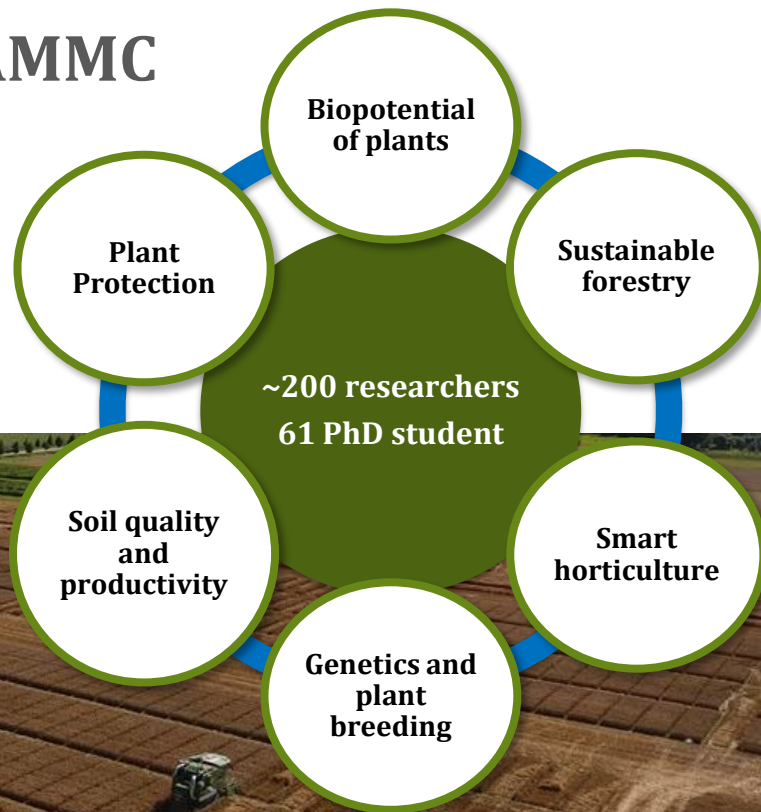
**This ranges:**

from basic to applied research  
agriculture  
horticulture  
forestry  
plant breeding  
biodiversity  
nourishment and nutrition  
plant protection  
environmental conservation  
renewable resources  
healthy and diverse food and high value products for medicine, cosmetics, food and much more.



# **LITHUANIAN RESEARCH CENTRE FOR AGRICULTURE AND FORESTRY**

# THE MAIN RESEARCH AREAS OF LAMMC

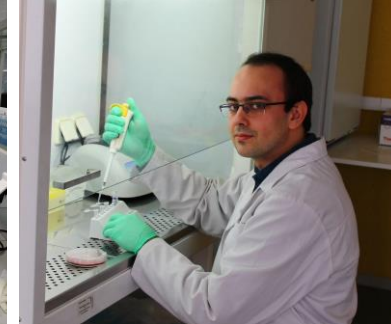
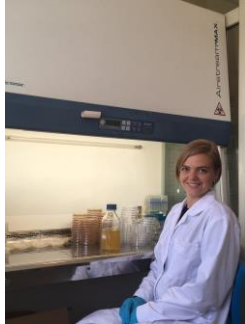
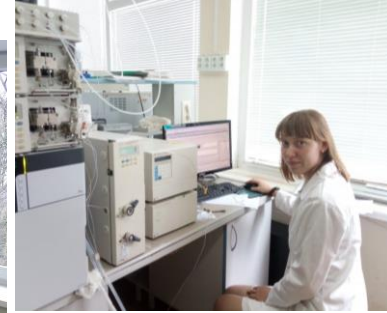
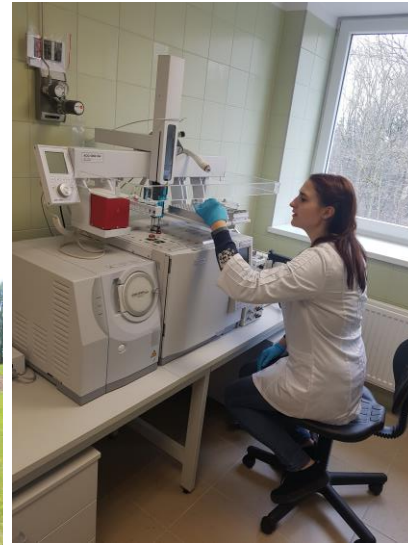




# PHD STUDIES AT LAMMC

PhD studies in the fields of:

- Agronomy;
- Forestry;
- Biochemistry;
- Ecology and environment.



# What can we suggest?

- Professional supervising;
- New research topics;
- Infrastructure for field and laboratory experiments;
- Mobility;
- Participation in conferences, seminars;
- International team.



# How to become the PhD student at LAMMC?



**You are PhD student at LAMMC!**



For more  
information  
contact us!



Dr. Vita Tilvikienė  
E-mail. [vita.tilvikiene@lammc.lt](mailto:vita.tilvikiene@lammc.lt)

Urtė Stulpinaitė  
E-mail. [urte.stulpinaite@lammc.lt](mailto:urte.stulpinaite@lammc.lt)

